

# Piemme



*Professional Project & Construction Management*





## CONTENTS

- Profile ..... 3
- Offer ..... 5
- Professional Skills..... 7
- Clients..... 8
- Main Jobs ..... 9
- Certifications ..... 13
- Location ..... 14





## PROFILE

**Piemme Group**, established in 1984, is leader on Italian market in the field of Project and Construction Management.

Due to specific methodological and technical knowledge, **Piemme Group** is characterized by the quality and the flexibility of services and by the capability to support Clients in solving their organizational, methodological, procedural systemic and operational problems in a coordinate and consistent way.

**Piemme Group** offers Project Management **Consultancy** and **Educational** services making available consultants who operate in this field from fifteen years; it gives an answer, as far as **software**, to a large area of needs of the Clients in all main industrial and logistic sectors; it also supplies Project and Construction Management **services** for Companies/Agencies through highly experienced and competent professionals.

### Our mission

---

To supply methodologies, services and technologically innovative tools in Project and Construction Management.

---

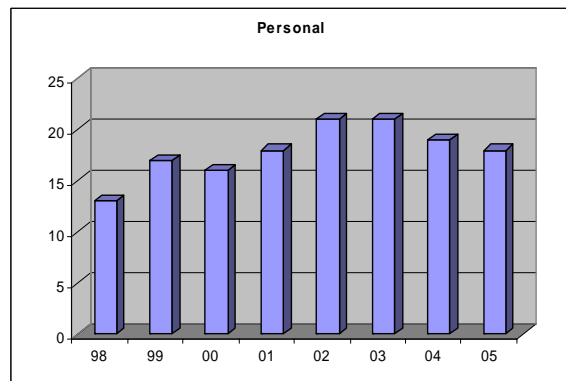
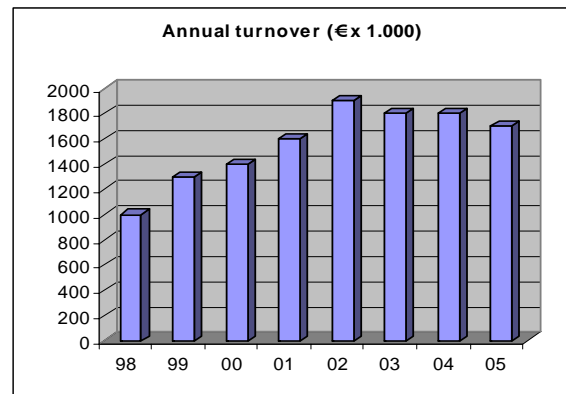




## OUR PROFILE

In Genoa headquarters 25 competent and experienced professionals tackle, understand and solve any methodological, managerial and organizational demand related to Project Management.

The awareness that the most important asset of a consultancy and services company lays in its own human resources involves a constant attention to the education of the whole personnel of **Piemme Group** (managers, technicians and administrative staff) through updating courses on: applications, technologies, methodologies, quality and management skills.





## OUR OFFER

**Piemme Group** offer is divided in four main business lines:

- ❖ **Consultancy:** with the aim to supply the Clients with a specialistic support for the design, implementation and start-up of project and construction management systems through:
  - check-up on the applied “general model”;
  - examination/definition of the organizational structure, roles, methodologies and procedures;
  - operational tests “on field”;
  - planning, implementation, monitoring.
  
- ❖ **Education:** with the aim to create (or strengthen) in the Client firms the technical and cultural basis, in order to promote the adoption of methodologies, criteria and techniques of project and construction management. The offered education includes courses of the following types:
  - Basic cultural;
  - methodological;
  - specialistic;
  - thematic.
  
- ❖ **Service:** with the aim to make available to Clients temporary Project and Construction Management teams. The offered supporting services relate to:
  - Planning;
  - scheduling;
  - cost estimating;
  - definition, assignment and technical/economical management of contracts
  - works progress control.
  
- ❖ **Software Development:** with the aim to develop and/or integrate the computer solutions capable to support Clients in their project and construction management activities specifically relating to:
  - Estimating, scheduling and budgeting;
  - Cost control;
  - Construction Management (inside activities);
  - Contract Management (outside activities).



Microsoft and Project Management Institute (PMI) certifications, together with the methodology to approach problems, are significant indicators of the quality of our services.



## OFFER

The complete offer of Piemme Group (consultancy, education, services and software developments) enables to tackle Client's needs in an over-all way.

Piemme Group capability to accept much a challenge is based on:

- An experienced capacity of understanding, defining and synthetizing Client's managerial needs;
- An updated knowledge of available technologies, strengthened by a solid partnership with **Microsoft**® ;
- The availability, in our own development centre, of products and applicative platforms together with a high experience in the development of "in house" software;
- An organization capable to operate in order to achieve the goals defined in the projects and agreed with the Clients.

Among the developed and available "in house" products, the following ones stand out:

- **"Bridge"**: a software as per Microsoft standard developed in order to support the operational staff in each phase of the project life-cycle (from proposal estimation to commissioning)
- **E.I.S.:** (Executive Information System): a system of "top management reporting" as per Microsoft standard developed in order to allow Top Management a quick and easy view of the project data at different aggregation levels.
- **WEB Portal:** Working areas, available on the WEB, developed starting from Microsoft platform "Share Point Portal Server" specifically useful for documents management.

The "portals" answer to the need of teams which operate "per project" of having a Share Point where:

- Locate and manage various information;
- Share knowledge;
- Connect people within a common network;
- Accelerate minutes and reports.





## PROFESSIONAL SKILLS

### ❖ *Project Manager*

- Is the interface between Piemme Group and the Client;
- Ensures the general coherence of the project, spotting eventual critical situations and suggesting the corrective actions.
- Determines the implementation plans and puts into effect the operation methodology in order to reach the fixed targets.

### ❖ *Project and Construction Management Senior Consultant*

- Is expert in designing, implementing and managing project planning and control systems;
- Understands Client's needs, defines requirements and specifications of the system and takes part in structuring and drawing up the operational procedures.

### ❖ *Project and Construction Management Specialist Consultant*

- Is expert in the application of project planning and control management methodologies
- Supports the Project Manager and the Project Groups of the Client in the phase of setting out and organizing the Project General Plan (time, Costs, quality) and managing the operational phases.

### ❖ *Project and Construction Management software system specialist*

- Defines functional specifications and software architectures
- Defines the flows within the procedure and the links with outside environment;
- Defines the planning standards and controls results and quality;
- Is an expert multilanguage software developer;
- Defines the general architecture of the module and is responsible for its implementation, considering all surrounding conditions as reference elements.





## MAIN CLIENTS

### Engineering and Main Contractor

- Ctip
- Fincantieri
- Fisia Italimpianti
- Fs-Area Ingegneria e Costruzioni
- Italferr
- Italimpianti
- STA (Sist. di Trasporto)
- Sviluppo Sistema Fiera

### Aerospace / Defense

- Aermacchi
- Agusta
- Alenia
- U.S. Navy Napoli
- U.S. Navy Sigonella
- Wass
- Whitehead Alenia

### Civil Works Consortia

- Cepav Uno
- Metrogenova
- Nuovo Polo Fieristico
- Pegaso
- Pont Ventoux

### Government Agencies / Public Administrations

- Agenzia Spaziale Italiana
- Agenzia Romana per il Giubileo
- Circumvesuviana
- Ente Autonomo Volturno
- Provincia di Genova
- Sogesid

### Industrial Plants

- Ansaldo Acque
- Ansaldo Industria
- Ansaldo Invest

### Energy

- Ansaldo Energia
- Coemsa (Brasile)
- Enel-Ape
- Ganz (Ungheria)

### Transports

- Ansaldo Breda
- Ansaldo Trasporti Sistemi Ferroviari
- Fs – Div. Mat. Rotabile

### Public Service Companies

- Amiu
- Autostrade
- Circumvesuviana

### Computer Science

- Elsag ERP
- Fs – Div. Centrale Informatica
- Ilva – Sist. Informativi

### Education

- Centro Ligure Produttività
- Cisita
- Elea
- Istud
- Isfort
- Sfera
- Sogea

### Project Financing

- Veneta Sanitaria Finanza di Progetto

### Others

- Elsag
- Finmeccanica
- Ilva – Div. Impianti
- Innse
- Lucas Management Systems
- Marconi





## Main Consultancy Jobs – 1/2

Client	Description of services	Personnel			
		Project Manager	Senior Cons.	P.M. Spec. Cons.	Supp. Spec. Cons.
Agenzia Spaziale Italiana	Aerospace Project Planning and Control System	1	2	1	1
Agusta	Project Management System Evaluation	1	4		2
Ansaldo Trasporti Sistemi Ferroviari	Metro Copenhagen – Project Planning and Control System	1	1		1
	Project Management System Improvement	1	1	1	
	Metro Dublino - Project Planning and Control System	1	1	1	
Astaldi	Project Management Plan set out for Nuovo Polo Fieristico di Milano	1	1		
Circumvesuviana	Projects Planning and Control System	1	2	1	1
Comune di Genova	Projects Planning and Control System	1			1
Elsag ERP	Consultancy on SAP (Project System module) in house and towards other Elsag Clients (ATM Torino, Italia Lavoro Roma, Wass Livorno, Agusta, ...)	1	1	1	





## Main Consultancy Jobs – 2/2

Client	Description of services	Personnel			
		Project Manager	Senior Cons.	P.M. Spec. Cons.	Supp. Spec. Cons.
Ente Autonomo Volturno	Organizational and methodological consultancy to implement an Investment planning and control system	1	2	1	1
Fincantieri	Organizational and procedural consultancy in order to improve the "ship" product	1	1	1	
	Consultancy to redefine specification for the acquisition of complex contracts (turn-key)	1	1	1	
	Quality System for Suppliers and their certification	1	1	1	1
	Consultancy to implement a scheduling system of the "ship" product	1	1	1	3
	Consultancy to implement a planning and control systems of the site hours	1	1	1	1
Sfera	Organizational and methodological consultancy to implement a planning and control system for ENEL Telemetry Project	1	2	1	
Veneta Sanitaria Finanza di Progetto	Organizational and methodological consultancy to implement a planning and control system for the New Hospital in Venezia – Mestre	1	2		1
Whitehead Alenia	SAP/module Project System consultancy	1			





## Main Service Jobs

Client	Description of services	Personnel			
		Project Manager	Senior Cons.	P.M. Spec. Cons.	Supp. Spec. Cons.
Agenzia Italiana per la preparazione del Giubileo	Support Service to planning and control of Jubilee 2000 projects	1	1	1	
Ansaldo Industria	Top Management activity on Ansaldo Industria Projects	1	1		
	Project Management Service on waterworks in Saudi Arabia		1		
	Project Management Service on industrial plants in Russia and Egypt		2		
	Supervision Service on Mechanical works in water plants in Saudi Arabia		1		
	Supervision Service on Electrical works in 22 water treatment plants in Egypt		1		
	Construction Management Service in 22 water treatment plants in Egypt		1		
Ansaldo Invest	Project Management Service on industrial plants		1		
Ansaldo Trasporti Sistemi Ferroviari	Project Management Service on Metro in Dublin		1		
	Supervision Service on Civil Works for Dublin Metro		1		
Cepav Uno	Project Control Service for High Speed train line MI-BO		1	2	
Elsag	Support Service to planning activity of "Critical Projects"		2		
Nuovo Polo Fieristico	Project Control Service in Milan			1	
Pegaso	Project Control Service for High Speed train line RM-NA		1		





## Main Education Jobs

Client	Description of services	Personnel			
		Project Manager	Senior Cons.	P.M. Spec. Cons.	Supp. Spec. Cons.
Ansaldo Trasporti Sistemi ferroviari	Project Management courses for PMI (Project Management Institute) Certification	1	2	1	
Cisita	Project Management basic courses	1	1		
Eidos	Project Management courses for PMI (Project Management Institute) Certification	1	1		
Elea	Basic education courses on Project Management		1		
Elsag	SAP PS Education courses	1	1		
Elsag ERP	SAP PS Education courses	1	1		
Isfort	Basic education courses on Project Management	1	1		
Istud	Basic education courses on Project Management	1	1		
Marconi	Basic education courses on Project Management	1	1		
Sfera	Basic education courses on Project Management of "Electronic Timer" project	1	2		
Sogea	Basic education courses on Project Management	1	1		





## CERTIFICATIONS



Microsoft Certified Partner



Registered Education Provider



Membro dell'Associazione Nazionale  
Impiantistica Industriale



Microsoft Project  
Solution Provider



Microsoft SharePoint  
Solution Provider





## HEADQUATER



GENOVA

Via G. Carducci 5/4  
16121 Genova

Telephone: +39 010 40.75.751  
Fax : +39 010 40.74.447  
e-mail: [pm@gruppopm.com](mailto:pm@gruppopm.com)

